

# IMPORTANT SAFETY AND INSTALLATION INSTRUCTIONS

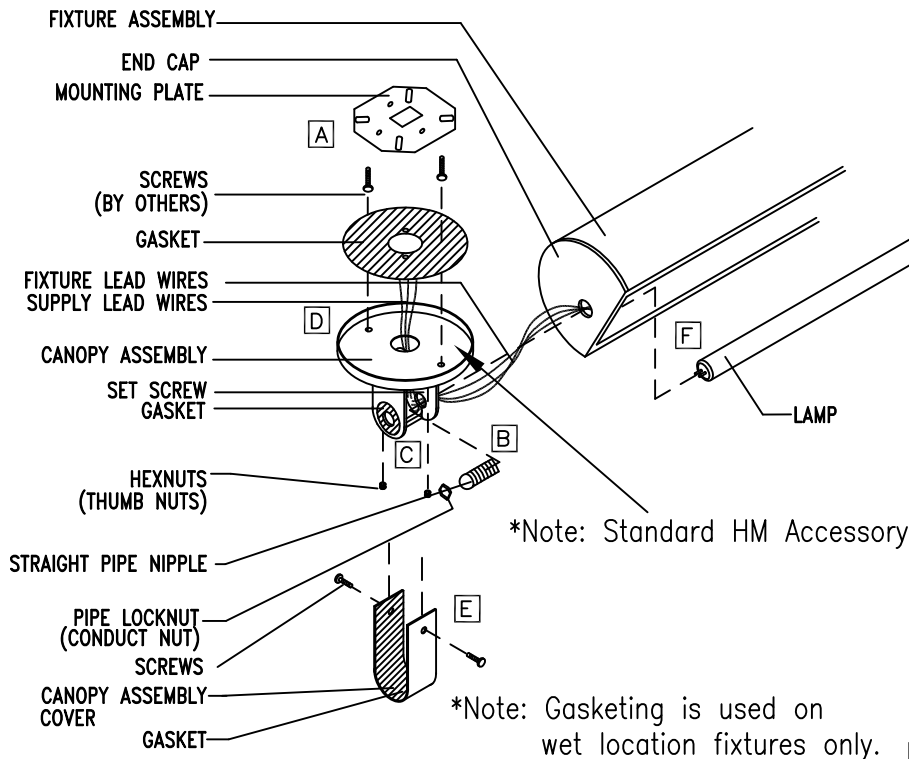
**WARNING:** Risk of fire and electric shock. This product is to be installed by a qualified electrician only.

**CAUTION:** When using electrical equipment, basic safety precautions should always be followed including the following: Read all instructions carefully before installation and save

for future use. Make sure installation and all connections are in accordance with National Electrical Code and any local regulations. To avoid possible electrical shock, be sure that power supply is turned off before installing or servicing this fixture. Servicing should be performed by qualified service personnel.

USE coated metal halide lamps. These instructions do not claim to cover all details or variations. When additional information is desired, please contact your SPI representative.

## ECHO DAMP/WET LOCATION HUB MOUNTS



[A] Attach mounting plate to junction box with screws (by others).

[B] Insert pipe nipple from the inside of canopy assembly. Enter it through hole of canopy and end cap of fixture and tighten down with pipe locknut provided.

(At the same time, fixture leads are fed from fixture through pipe nipple and into canopy assembly)

[C] Inside canopy assembly, make the necessary splice connections between fixture lead wires and supply wires with wire nuts (by others).

[D] Secure canopy assembly to adjustable mounting plate Using screw and thumb nuts provided.

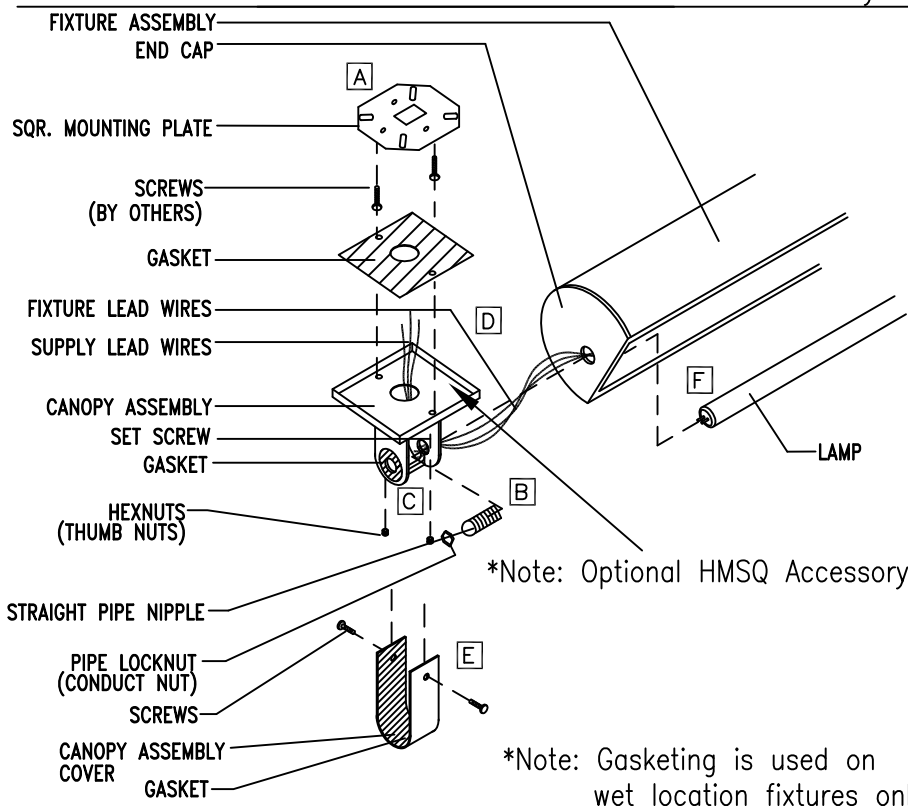
Note 1: If using wet located fixture be sure that gasket is placed in between canopy assembly and mounting plate before tightening.

Note 2: Set screws are located inside of canopy assembly for tightening fixture after adjusting aiming angle. (Set screw is not used w/ echo 3.5)

[E] Slide cover/or gasketed cover (gasketed cover used on wet located fixture only) over canopy assembly and attach using screws provided.

[F] Install lamp per lamp replacement label. Mounting typical of both ends of fixture. May be single fixture or continuous run.

REFER TO INSTALLATION #IS18389X & #IS18390X



[A] Attach mounting plate to junction box with screws (by others).

[B] Insert pipe nipple from the inside of canopy assembly. Enter it through hole of canopy and end cap of fixture and tighten down with pipe locknut provided.

(At the same time, fixture leads are fed from fixture through pipe nipple and into canopy assembly)

[C] Inside canopy assembly, make the necessary splice connections between fixture lead wires and supply wires with wire nuts (by others).

[D] Secure canopy assembly to adjustable mounting plate using screw and thumb nuts provided.

Note 1: If using wet located fixture, be sure that gasket is placed in between canopy assembly and mounting plate before tightening.

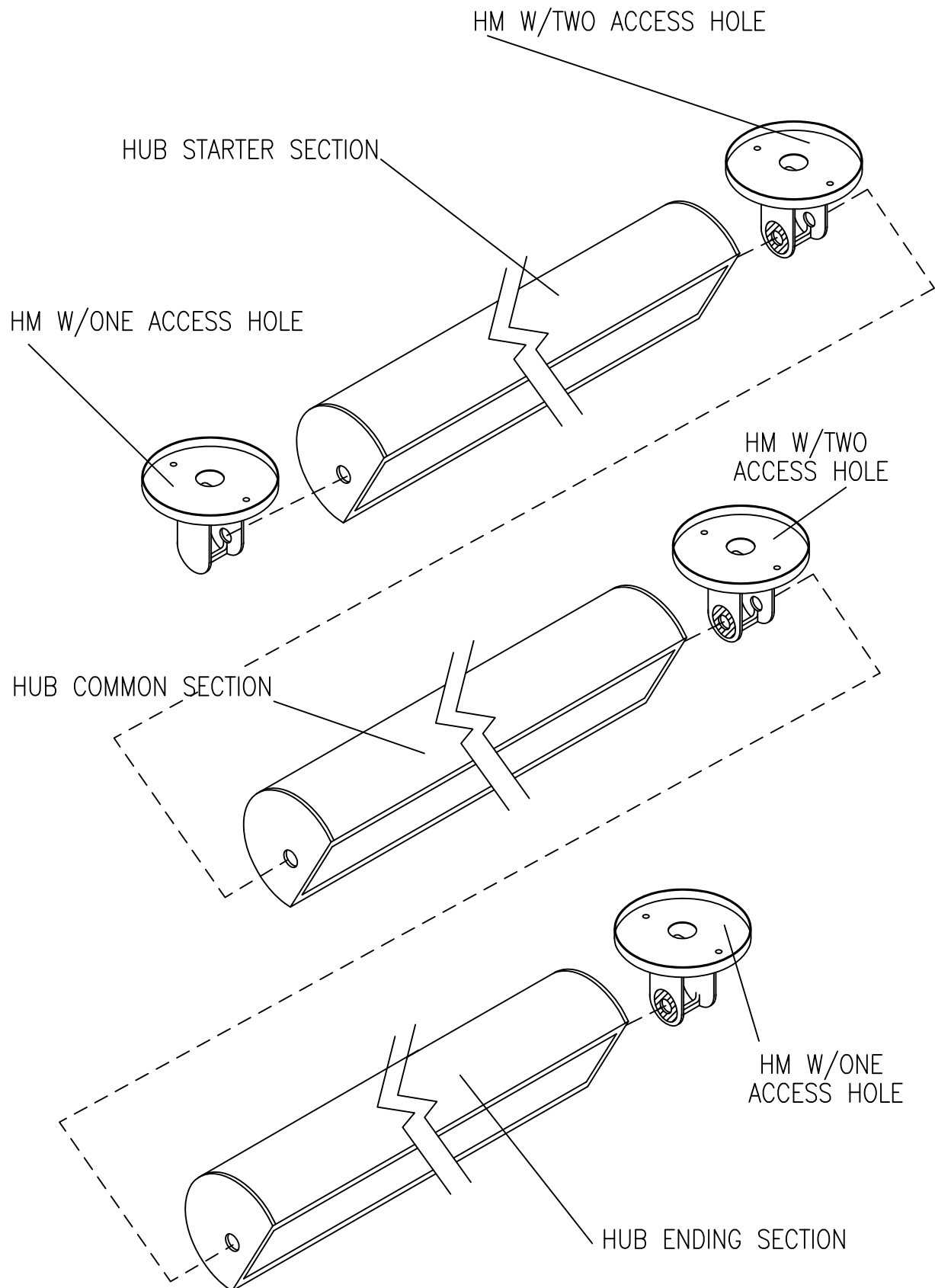
Note 2: Set screws are located inside of canopy assembly for tightening fixture after adjusting aiming angle.

[E] Slide cover or gasketed cover (gasketed cover used on wet located fixture only) over canopy assembly and attach using screws provided.

[F] Install lamp per lamp replacement label. Mounting typical of both ends of fixture. May be single fixture or continuous run.

10/23/13  
IS17465X-A

# HUB MOUNT CONTINUOUS RUN ASSEMBLY



10/23/13  
IS17465X-B